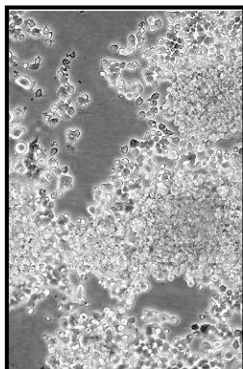


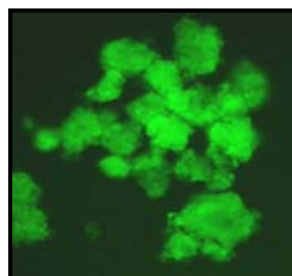
LINTERNA[®] CELL LINES

GREEN FLUORESCENT PC-12 RAT PHEOCHROMOCYTOMA CELL LINE



Product Name:	LINTERNA PC12 Cell line
Catalog Number:	P20109
Cell Type:	PC-12 Rat pheochromocytoma Cells
Fluorescent Protein:	TurboGFP (Evrogen)
Format:	> 2 x 10 ⁶ cells in Cryopreserved vials
Storage:	Liquid Nitrogen

A novel green fluorescent PC-12 cell line has been developed through stable transfection with Evrogen TurboGFP. This cell line expresses green fluorescent protein gene sequences as free cytoplasmatic proteins.



About PC-12 Cell line

PC-12 is a cancer cell line established from a pheochromocytoma of the rat adrenal medulla in 1976. They are neuron-like small cells and they normally do not attach and grow in clumps of small cells in suspension. PC-12 cells are known to be a useful model system for neurobiological and neurochemical studies; expressing xenobiotic metabolizing enzymes. These cells were also described to synthesize catecholamines (dopamine, norepinephrine). PC-12 cells respond reversibly to Nerve Growth Factor (NGF) by induction of the neuronal phenotype.

About TurboGFP

TurboGFP is an improved variant of the green fluorescent protein CopGFP cloned from copepoda *Pontellina plumata* (Arthropoda; Crustacea; Maxillopoda; Copepoda). Like CopGFP, turboGFP reveals bright green fluorescence and maturation than EGFP when expressed in eukaryotic cells. In contrast to the previous version, TurboGFP does not form aggregates in long-term cultures

Use Restriction to be enclosed with each Licensed Product

The resultant product will contain a proprietary nucleic acid coding for a proprietary fluorescent protein intended to be used for research purposes only. No rights are conveyed to modify or clone the gene encoding fluorescent protein contained in this product, or to use the gene or protein other than for non-commercial research, including use for validation or screening compounds. For information on commercial licensing, contact Licensing Department, Evrogen JSC, email: license@evrogen.com.

tGFP-PC-12 Cell line is stably-transfected clonal cell line that is ready to use in cell-based assay applications. This stably transfected clonal cell line provides consistent levels of expression, which helps simplify the interpretation of results. This cell line is intended to be used as “in vitro” model for neuronal differentiation studies.

Quality Control

All cells are performance assayed and test negative for mycoplasma, bacteria, yeast and fungi. Cell viability, morphology and proliferative capacity are measured after recovery from cryopreservation. Innoprot guarantees stable expression for many generations and provides support for cell culture and visualization.

THIS PRODUCT IS FOR RESEARCH PURPOSES ONLY. It is not to be used for drug or diagnostic purposes, nor is it intended for human use. Innoprot products may not be resold, modified for resale, or used to manufacture commercial products without written approval of Innovative Technologies in Biological Systems, S.L.