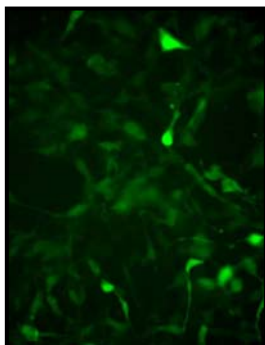


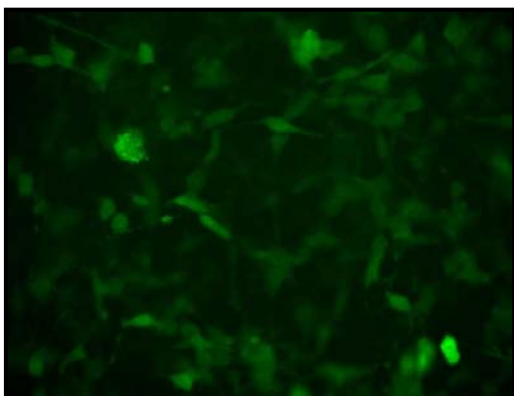
LINTERNA™ CELL LINES

GREEN FLUORESCENT CT-26 CELLS



Product Name:	LINTERNA™ – CT-26 Cell line
Catalog Number:	P20114
Cell Line:	murine colon adenocarcinoma CT-26
Fluorescent Protein:	tGFP
Format:	3 x 10 ⁶ cells in Cryopreserved vials
Storage:	Liquid Nitrogen

A novel green fluorescent CT-26 cell line has been developed through stable transfection with Evrogen TurboGFP. This cell line expresses green fluorescent protein gene sequences as free cytoplasmatic proteins.



tGFP-CT26 Cell line is stably-transfected clonal cell line that is ready to use in cell-based assay applications. This stably transfected clonal cell line provides consistent levels of expression, which helps to simplify the interpretation of results. This cell line is intended to be used as “in vitro” model for research studies.

About CT-26

CT26 is an N-nitroso-N-methylurethane-(NNMU) induced, undifferentiated colon carcinoma cell line. They are fibroblasts, adherent and growing as monolayers.

About TurboGFP

tGFP is an improved variant of the green fluorescent protein CopGFP cloned from copepoda *Pontellina plumata* (Arthropoda; Crustacea; Maxillopoda; Copepoda). It possesses bright green fluorescence (excitation/emission max = 482/ 502 nm) that is visible earlier than fluorescence of other green fluorescent proteins. tGFP is mainly intended for applications where fast appearance of bright fluorescence is crucial. It is specially recommended for cell and organelle labeling and tracking the promoter activity.

Use Restriction – Research Purposes Only

This product contains a proprietary nucleic acid coding for a proprietary fluorescent protein intended to be used for research purposes only. No rights are conveyed to modify or clone the gene encoding fluorescent protein contained in this product, or to use the gene or protein other than for non-commercial research, including use for validation or screening compounds. For information on commercial licensing, contact Licensing Department, Evrogen JSC, email: license@evrogen.com.